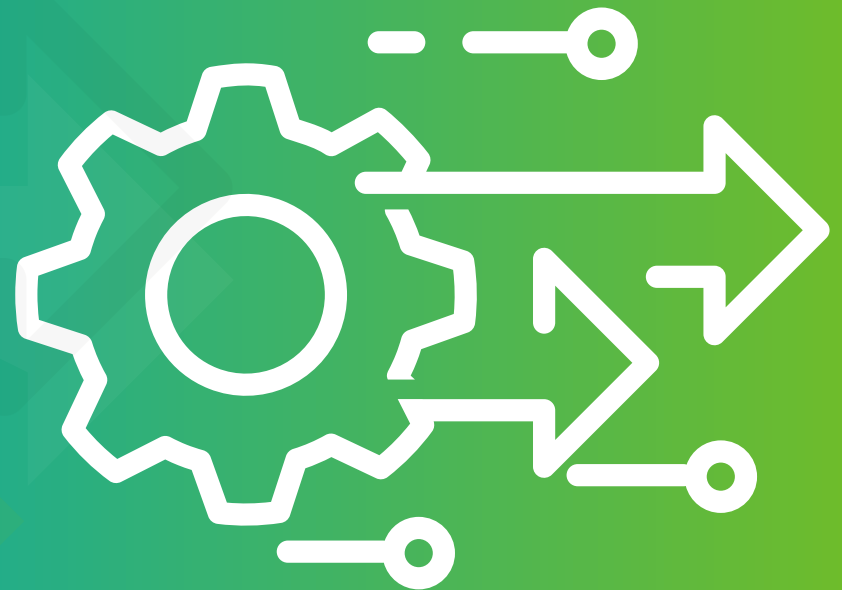


DISCRETE DATA CONVERSION

WHAT IT IS AND WHY IT MATTERS
WHEN CHOOSING AN EHR



Changing EHRs Can Be Scary— But It Doesn't Have To Be

We hear you—switching to a new EHR can be complicated and intimidating. Your practice is already using a variety of applications to document patient data. Too often, when changing over to a new EHR, data conversion is frustrating, requires a ton of redundant data re-entry, and results in making it difficult to search for historical patient data and run reports.

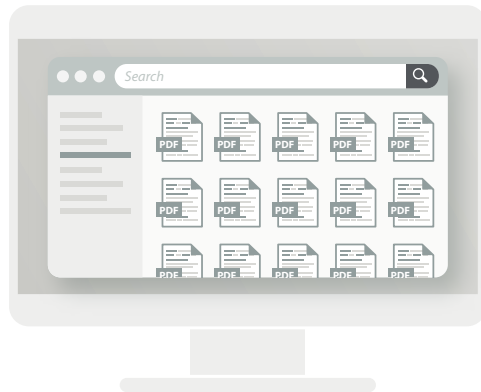
But here's the good news:
Discrete Data Conversion takes
care of the complications behind
the scenes so you don't have to.



What exactly is discrete data conversion? >>>

What is Discrete Data Conversion?

When you decide to convert your practice to a new EHR vendor there are typically **two methods of data conversion**:



Data Quality



Conversion Time



PDF scan conversion

All historical EHR data will be scanned into separate PDFs (often one PDF per encounter) and then uploaded to the new system. For EHR vendors who cannot support a discrete data conversion, this is usually their best option.

This method of conversion results in you having to manually search through a plethora of scanned PDFs for your data and then have to re-enter that data for every patient.

Not ideal.



Data Quality



Conversion Time



Discrete data conversion

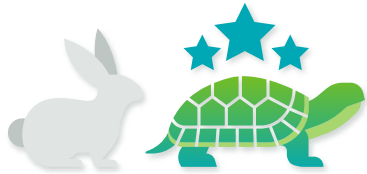
All of your data is moved to the new system in specifically mapped fields that are both searchable and reportable.

This method of conversion results in all of your data pre-populated, automatically searchable and ready to go in the new system.

Much better!

See *why* discrete data conversion is better. >>>

Why a Discrete Data Conversion is *Better* Than Scanned PDFs



SAVES TIME IN THE LONG RUN

Is a PDF scan faster? Yes. But faster doesn't mean better.

A PDF scan conversion may prove to be faster, but **it will cost you a lot more time in the long run.**

A discrete data conversion takes a little more time and effort, but when it's complete it will have a direct effect on how quickly your practice is up and running on its new system.



HISTORICAL DATA IS ALREADY IN THE NEW SYSTEM

A PDF scan will result in time-consuming issues for the provider. Information from **every individual patient's** last encounter **must be manually reentered into the new system.** This adds up to a lot of redundant data entry.

With a discrete data conversion, however, the patient's historical data is already in the chart with no need for reentry into the new EHR.



DATA IS EASILY AND QUICKLY SEARCHABLE

A PDF conversion forces providers to manually search an archived library of dozens if not hundreds of PDFs to find the info they need. There is no way to perform a search for specific dates or items.

With a discrete data conversion, your data is already in the system so it can be found quickly and easily with standard search functions.



HISTORICAL DATA IS IMMEDIATELY REPORTABLE

PDFs contain data that will not be included when you try to run reports. To run a report, you would need to go from PDF to PDF, manually reentering and backdating all of your historical data on your own.

With discrete data conversion, however, your historical data is immediately reportable.

Let Nextech be your professional data movers

The choice between PDF vs. discrete data conversion is **comparable to physically moving your office to a new location.**

DO IT YOURSELF

Would you prefer to **move on your own**, renting a truck, loading the contents of your practice into it, driving to the new location, and then unloading and unpacking everything?

U-Move



OR

PROFESSIONAL MOVERS

Or would you rather **hire professional movers** and have everything already waiting for you when you arrive at the new location?

 Nextech



Take a closer look at our process! >>>

Nextech's Tested & Proven Discrete Data Conversion Process

Nextech has taken what was once an extremely complex task and simplified it in a way that our competitors just can't match. **Our team will work closely with your practice to ensure your data comes across to your new EHR in the best possible format by using the following process:**

1

EXTRACT AND MAP DATA

Your practice will work with a Nextech-certified vendor who will then **extract the data from your source EHR and map discrete data points** to your new system.

2

CREATE AND TEST A TRIAL GROUP

A Nextech-certified vendor will **create a trial group featuring converted data for you to review.**

3

REFINE AND APPROVE

We'll refine data map points for the trial group and **review updates with you until the data conversion meets your standards.**

4

COMPLETE CONVERSION

We'll import the data for your whole practice into your new EHR, usually over a weekend or scheduled office closure to minimize downtime.

Let's Talk About Your Practice's Conversion

Have questions about whether your existing product can support a discrete data conversion? Let's have a conversation about it and get your practice up and running with one of the best EHRs on the market.



Let's Connect!



© 2022 Nextech Systems, LLC

All Rights Reserved. No part of this document may be photocopied, reproduced, stored in a retrieval system, or transmitted, in any form or by any means, whether electronic, mechanical, or otherwise, without the prior written permission of Nextech Systems, LLC.